

Panel 800 Version 5 – Operator Panels

Functional Key Panels



PP820A

240*64 pixels, graphics & text, black/white.
 New CPU and power boards – no UL 1604 certification.
 Requires Panel Builder 800 version 5 for configuring. To protect the front, it's recommended to use the RX820 Key Cover.

Article no.

3BSE042243R2



PP826A

5,7" TFT, 320x240 pixels, graphics & text, color.
 New display, CPU and power boards – no UL 1604 certification.
 Requires Panel Builder 800 version 5 for configuring. To protect the front, it's recommended to use the RX826 Key Cover.

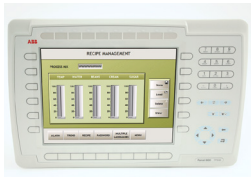
3BSE042244R3



PP836A

6,5" TFT, 640x480 pixels, graphics & text, color.
 New display, CPU and power boards – no UL 1604 certification.
 Requires Panel Builder 800 version 5 for configuring. To protect the front, it's recommended to use the RX836 Key Cover.

3BSE042237R2



PP846A

10,4" TFT, 800x640 pixels, graphics & text, color.
 New CPU and power boards – no UL 1604 certification.
 Requires Panel Builder 800 version 5 for configuring. To protect the front, it's recommended to use the RX846 Key Cover.

3BSE042238R2